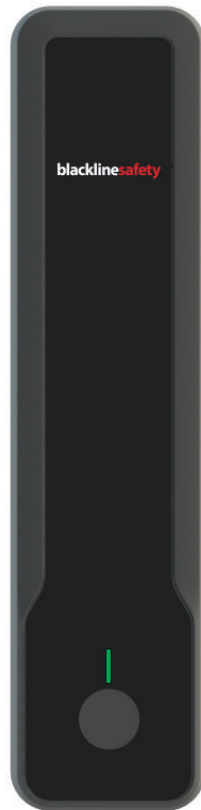


INTRINSICALLY SAFE

LOCATION BEACON



RESPOND TO INDOOR INCIDENTS WITH PRECISION

**Precise positioning empowers emergency response**

In certain facilities, GPS signals alone may not provide sufficient positioning precision to locate employees during an emergency response. In such circumstances, every second counts and time wasted searching for someone could mean the difference between rescue and recovery.

Blackline Safety addresses this challenge with Location Beacons — compact wireless positioning transmitters. Beacons are installed where employees operate, from one per floor to one per room depending on facility size and operations. Beacon locations are then recorded on custom floor or site plans on a live map in Blackline Live, Blackline’s safety monitoring software, so you always know exactly where your people are in context of their surroundings. Beacons are self-powered and affordable, taking only minutes to install without any calibration or triangulation.

Each beacon broadcasts a unique identity number that is received by Blackline Safety’s monitoring devices, including G7c and G7x. When personnel are within proximity of beacons, monitoring devices store the nearby beacon identities and reports their location to Blackline Live.

Protect the safety of your workforce with Loner Beacon indoor location technology.

Features



Intrinsically safe



Precise location technology



Floor plans and location names



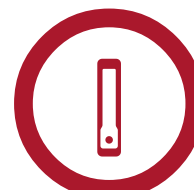
Long battery life



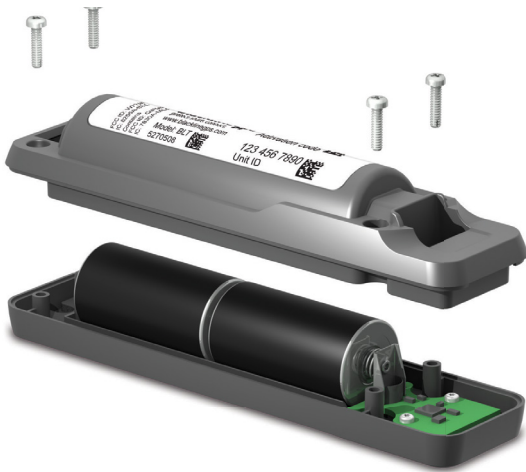
IP65 sealed



Easy setup



Compact design



Easy Location Beacon Battery Replacement

## Alert Management

**Victoria Souter**  
 Company: Blackline  
 Device ID: 2564001125  
 Mobile: 403-555-1234  
 Work: N/A  
 Home: N/A  
**Emergency Alert**  
 2015-05-07 15:43:15 MDT  
 -- Choose a reason for resolving --  
 Resolve Alert

**Notes**  
 Add a note...  
 Post  
 Brendon Cook  
 2015-05-07 15:45:29 MDT  
 Cannot reach the employee, escalating to the supervisor.  
 Brendon Cook  
 2015-05-07 15:44:32 MDT  
 Calling out to the employee

**Response Protocol**  
 Fall Detection, No-motion Detection, and Missed Check-in Alert  
 1a. Call emergency services (9-1-1 where possible)  
 1b. A second agent is to call the worker to verify potential incident  
 2. Escalate to supervisor if employee is unreachable  
 3. Escalate to emergency services if the supervisor is not available.

Custom floor and site plans are overlaid on top of the interactive Google map

## DETAILED SPECIFICATION

### Size & Weight

**Size:** 161 mm H x 40 mm W x 32 mm D (6.4" x 1.6" x 1.3")  
**Weight:** 210 g (7.4 oz)

### Mounting

Mounting bracket included  
**Mounting methods:** screws, tie straps, adhesive  
**Mounting options:** walls, wall corners, poles, etc.

### Buttons & Indicator Lights

Single button for powering on/off plus configuration  
 Green LED for power indication and configuration  
 Red LED for low battery indication

### Wireless Communication

**Indoor positioning radio:** 2.4 GHz to supported Loner safety monitoring devices

### Location Technology

Low-power continuous beacon signal enables Loner safety monitoring device proximity detection

### Beacon Signal Range

Four configurable signal range levels between 4.5 m and 36 m (15 ft and 120 ft) line of sight (less range when obstructed)

### Notification Messages

Low Battery communicated by Loner or G7 devices

### Power & Battery

**Batteries:** two C-cell alkaline (included)  
**Battery life:** 5 years continuous operation at highest power setting, no wiring required

### Environmental

**Storage temperature:** -40 to 65° C (-40 to 149° F)  
**Operating temperature:** -20 to 55° C (-4 to 131° F)  
**Ingress Protection:** IP65

### Regulatory Compliance

Class I, Div 1, Groups A-D, T4  
 ATEX: CE II 1G, Ex ia IIC T4 Ga  
 IECEx: Ex ia IIC T4 Ga  
 RoHS  
 FCC ID: W77BCN  
 IC: 8255A-BCN

### Device Requirements

Blackline Live Portal user account with activated, compatible Loner or G7 devices

### Warranty

One year limited factory warranty

### Wireless Coverage and Activated Service Plans

**2.4 GHz operation regions:** global  
**Service plan options:** no service plan required

### Blackline Live Web Application

**Features Include:** Beacon map editor, alarm banner, event history, device location mapping, device management, alert & notification settings and more  
**Comprehensive safety alert life cycle management:** includes alert configuration profiles, safety protocol, and emergency contacts

*All specifications subject to change without notice.  
 © Copyright 2016 Blackline Safety Corp. All trademarks, product names and logos are the property of their respective owners.*

AUTHORIZED BLACKLINE SAFETY RESELLER



Visit: [guardianangelsafety.co](http://guardianangelsafety.co)  
 Email: [info@guardianangelsafety.co](mailto:info@guardianangelsafety.co)