

COST EFFECTIVE SAFETY

with Meitrack wearable
Personal Alarms and
Halo Mobile App



Meitrack P88 and P99 devices paired with the Halo App and Interface provide cost-effective, reliable safety for your lone & remote workers who operate in cell cover.

Features:



SOS



Auto dial to connect two way
voice to monitoring station



Fall detection



Geofences with entry and exit alerts



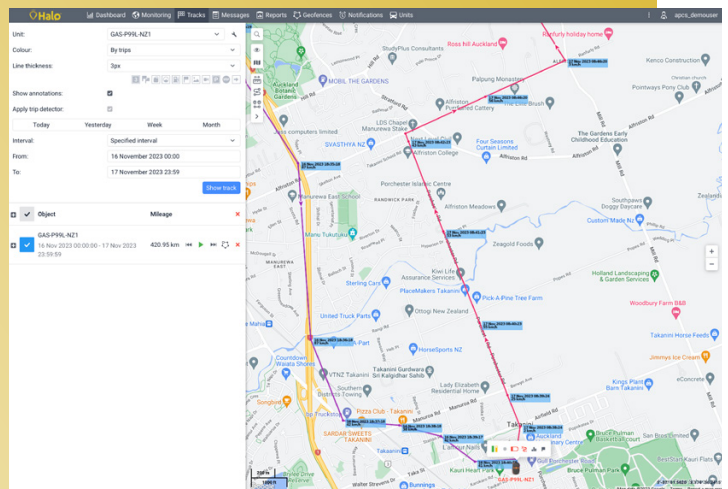
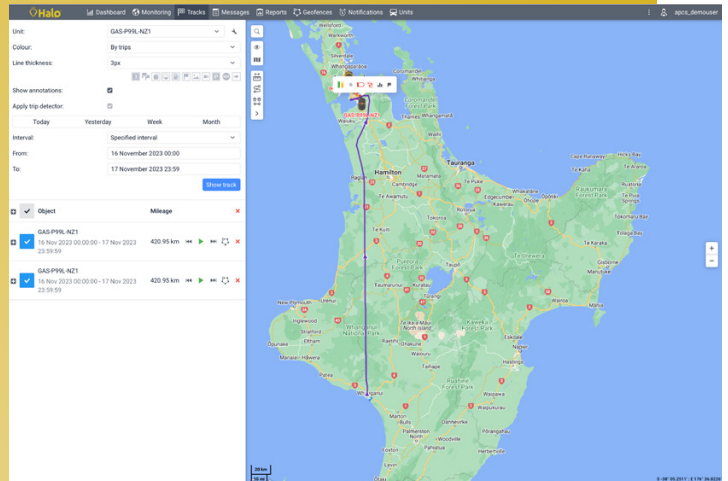
Meitrack P88L



Meitrack P99L

HALO HUB

Choose to use the Halo lone worker app, or the Meitrack devices on the Halo Hub mapping interface. Create geofences with entry and exit alerts. SOS Integrated to our response software for fast reliable response (self monitoring also an option).



Prioritise Safety.
Contact us today to
discuss a tailored solution
to keep your staff safe

guardianangelsafety.co
info@guardianangelsafety.co



GUARDIAN ANGEL SAFETY
Safety when it matters most

MEITRACK P99L

PORTABLE GPS TRACKER



The P99 will last beyond 15 hour shifts while sending updated location to Halo every 1min. GPS cannot see through roofs so if staff are going into buildings, this constant tracking is imperative so that we can find them if they are in trouble.

FEATURES

- Live Tracking
- SOS Button
- Fall Detection
- IP 67 Water Resistant
- Two-Way Audio (auto dials our emergency line on SOS activation)
- Wireless & Magnetic Charging
- 4G (LTE Cat 1/M1/Nb2) Network
- 20+ hours on 1min tracking updates

TECHNICAL SPECIFICATIONS

GPS Accuracy	2.5m
Dimension	108 x 52 x 18 mm
Weight	106g
Temperature Range	-20°C – 55°C
Water Resistant Rating	IP67
Microphone & Speaker	Internal
WiFi Positioning	WiFi 2.4 GHz, 802.11 b/g/n
Charging	2 charging methods a) Wireless charging (optional): 500mA (charging time: about 6.5hours) b) Magnetic charging: 1800mA (charging time: about 2.5hours)

MEITRACK P88L

PORTABLE GPS TRACKER



Suitable for fixed location alerts (Libraries, reception desks etc) or staff who are in the field for short durations. With its smaller battery (and size) the P88 on Halo is perfect for fixed locations or staff who only pop out for a few hours, or who are always in view of the sky. Constant tracking and location updates to Halo is imperative for safety if staff are entering buildings and out and about all day, but if staff are at fixed sites, we can log the site address so we don't need to track. Or if they are always outside and in view of the sky, the GPS location will work so that's also not a problem.

FEATURES

- Live Tracking
- SOS Button
- Fall Detection
- IP 67 Water Resistant
- Two-Way Audio (auto dials our emergency line on SOS activation)
- Magnetic Charging
- 4G (LTE Cat 1/M1/Nb2) Network
- 10+ hours on 1min updates

TECHNICAL SPECIFICATIONS

GPS Accuracy	2.5m
Dimension	67.8 mm x 44.4 mm x 16.3 mm
Weight	60g
Temperature Range	-10°C to 65°C
Water Resistant Rating	IP67
Microphone & Speaker	Internal
WiFi Positioning	WiFi@2.4 GHz, 802.11 b/g/n
Charging	Fast magnetic charging (standard): 1800 mA (charging time: about 1.5 hour)

Prioritise Safety.
Contact us today to discuss a tailored solution to keep your staff safe

guardianangelsafety.co
info@guardianangelsafety.co



GUARDIAN ANGEL SAFETY
Safety when it matters most